

MIXER MILL MM 400

A true multipurpose mill



The Mixer Mill MM 400 is a compact, versatile bench-top unit developed specially for dry, wet and cryogenic grinding of small sample amounts.

This laboratory mill mixes and homogenizes up to 2 x 20 ml powders and suspensions within a few seconds. It is also perfectly suitable for the disruption of biological cells as well as for DNA/RNA and protein extraction. With its powerful performance and great flexibility, the Mixer Mill MM 400 is a unique product in the market.

You may also be interested in the mixer mill models MM 500 nano or MM 500 vario which operate with the same functional principle but with a higher frequency of 35 Hz. Each model has a specific application focus.



[Click to view video](#)

Product Video

MIXER MILL MM 400

REVIEWS FROM OUR CUSTOMERS

PERFORMANCE AND DESIGN

- | Powerful size reduction and homogenization by impact and friction with up to 30 Hz
- | Equipped with 2 grinding stations for up to 20 samples per run
- | Digital parameter setting ensures reproducible results
- | Memory for 9 Standard Operating Procedures (SOP)



UNMATCHED VERSATILITY

- | 3 different grinding modes: dry, wet or cryogenic
- | Mixes powdered sample and binder in plastic vessels prior to pelletizing, e. g. for XRF analysis
- | Suitable for research applications such as mechanochemistry or for biological cell disruption by bead beating

MIXER MILL MM 400

SOLUTIONS FOR BIOLOGICAL APPLICATIONS AND CELL DISRUPTION

Laboratory Mixer Mills like the MM 400 are widely used for homogenizing biological samples such as tissue, liver, muscle or plant materials like cannabis. For cell disruption via bead beating mixer mills are also the perfect solution. The MM 400 accepts adapters for different single-use vials with the following capacities per batch:

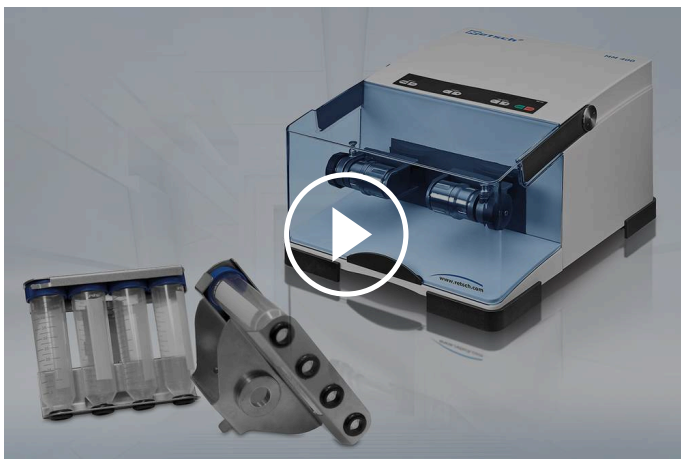
20 x 0.2 ml / 20 x 1.5 or 2 ml / 10 x 5 ml / 8 x 30 ml / 8 x 50 ml

The MM 400 can be used for efficient cell disruption of max. 240 ml cell suspension for DNA/RNA and protein extraction. It is also possible to



isolate intact bacteria from tissue in 8 x 30 ml bottles or 10 x 5 ml vials for accurate diagnosis of infections.

Accessories for the pulverization of 25 - 30 g plant material, like cannabis flower buds, include conical centrifugation tubes.



[Click to view video](#)

Mixer Mill MM 400 - Yeast Cell Disruption



[Click to view video](#)

Mixer Mill MM 400 - Cryogenic Grinding

FOR SAFE AND EFFECTIVE GRINDING PROCESSES

ACCESSORIES FOR THE MIXER MILL MM 400



GRINDING JARS IN 6 DIFFERENT MATERIALS

The nominal volume of the screw-top grinding jars ranges from 1.5 ml to 50 ml; available materials include hardened steel, stainless steel, agate, tungsten carbide, zirconium oxide and PTFE, ensuring contamination-free sample preparation.



ADAPTERS FOR SINGLE-USE VIALS

Adapters for 0.5 / 1.5 / 2 / 5 ml single-use vials can be used in the MM 400. For larger sample amounts, e. g. for protein extraction, adapters for 50 ml conical centrifugation tubes or 30 ml wide-mouth bottles are available.



CRYOKIT FOR GRINDING WITH LN₂

The CryoKit is a cost-efficient solution for occasional cryogenic grinding with the Mixer Mill MM 400. This set of insulated containers, tongs and safety glasses is used for pre-cooling the grinding jar in liquid nitrogen.

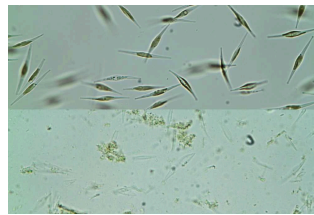
MIXER MILL MM 400

TYPICAL SAMPLE MATERIALS

RETSCH mixer mills are true allrounders. They homogenize, for example, alloys, animal feed, bones, ceramics, cereals, chemical products, coal, coke, drugs, electronic scrap, glass, grains, hair, minerals, oil seeds, ores, paper, plant materials, plastics, sewage sludge, soils, straw, tablets, textiles, tissue, tobacco, waste samples, wood, wool, etc.



hair



cell disruption



capsules



soil

To find the best solution for your sample preparation task, visit our application database.

TECHNICAL DATA

Applications	size reduction, mixing, homogenization, cell disruption, cryogenic grinding
Field of application	agriculture, biology, chemistry / plastics, construction materials, electronics, environment / recycling, food, geology / metallurgy, glass / ceramics, mechanosynthesis, medicine / pharmaceuticals
Feed material	hard, medium-hard, soft, brittle, elastic, fibrous
Size reduction principle	impact, friction
Material feed size*	<= 8 mm
Final fineness*	~ 5 µm
Batch size / feed quantity*	max. 2 x 20 ml
No. of grinding stations	2
Setting of vibrational frequency	digital, 3 - 30 Hz (180 - 1800 min ⁻¹)
Typical mean grinding time	30 s - 2 min
Dry grinding	yes
Wet grinding	yes
Cryogenic grinding	yes
Cell disruption with reaction vials	yes, up to 20 x 2.0 ml
Self-centering clamping device	yes
Type of grinding jars	screw top design
Material of grinding tools	hardened steel, stainless steel, tungsten carbide, agate, zirconium oxide, PTFE
Grinding jar sizes	1.5 ml / 5 ml / 10 ml / 25 ml / 35 ml / 50ml
Setting of grinding time	digital, 10 s - 99 min
Storable SOPs	9
Electrical supply data	100-240 V, 50/60 Hz
Power connection	1-phase
Protection code	IP 30
Power consumption	150 W
W x H x D closed	371 x 266 x 461 mm
Net weight	~ 26 kg
Standards	CE

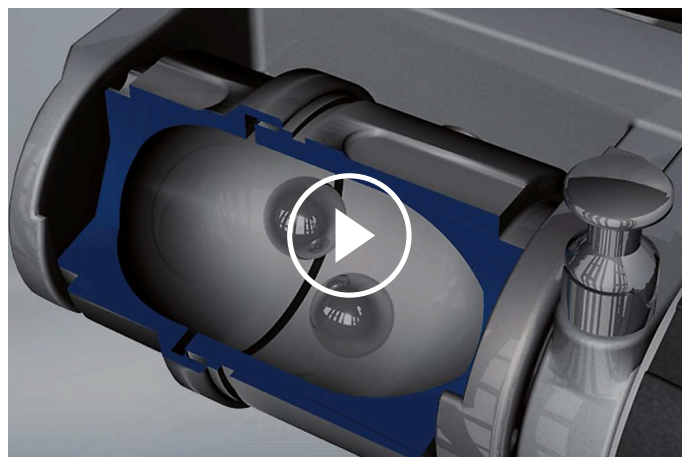
*depending on feed material and instrument configuration/settings

MIXER MILL MM 400

FUNCTIONAL PRINCIPLE

The grinding jars of the mixer mill MM 400 perform radial oscillations in a horizontal position. The inertia of the grinding balls causes them to impact with high energy on the sample material at the rounded ends of the jars and pulverize it. Also, the movement of the jars combined with the movement of the balls result in the intensive mixing of the sample.

The degree of mixing can be increased even further by using several smaller balls. If several small balls are used (e.g. glass beads) then, for example, biological cells can be disrupted. The large frictional impact effects between the beads ensure effective cell disruption.



[Click to view video](#)

www.retsch.com/mm400